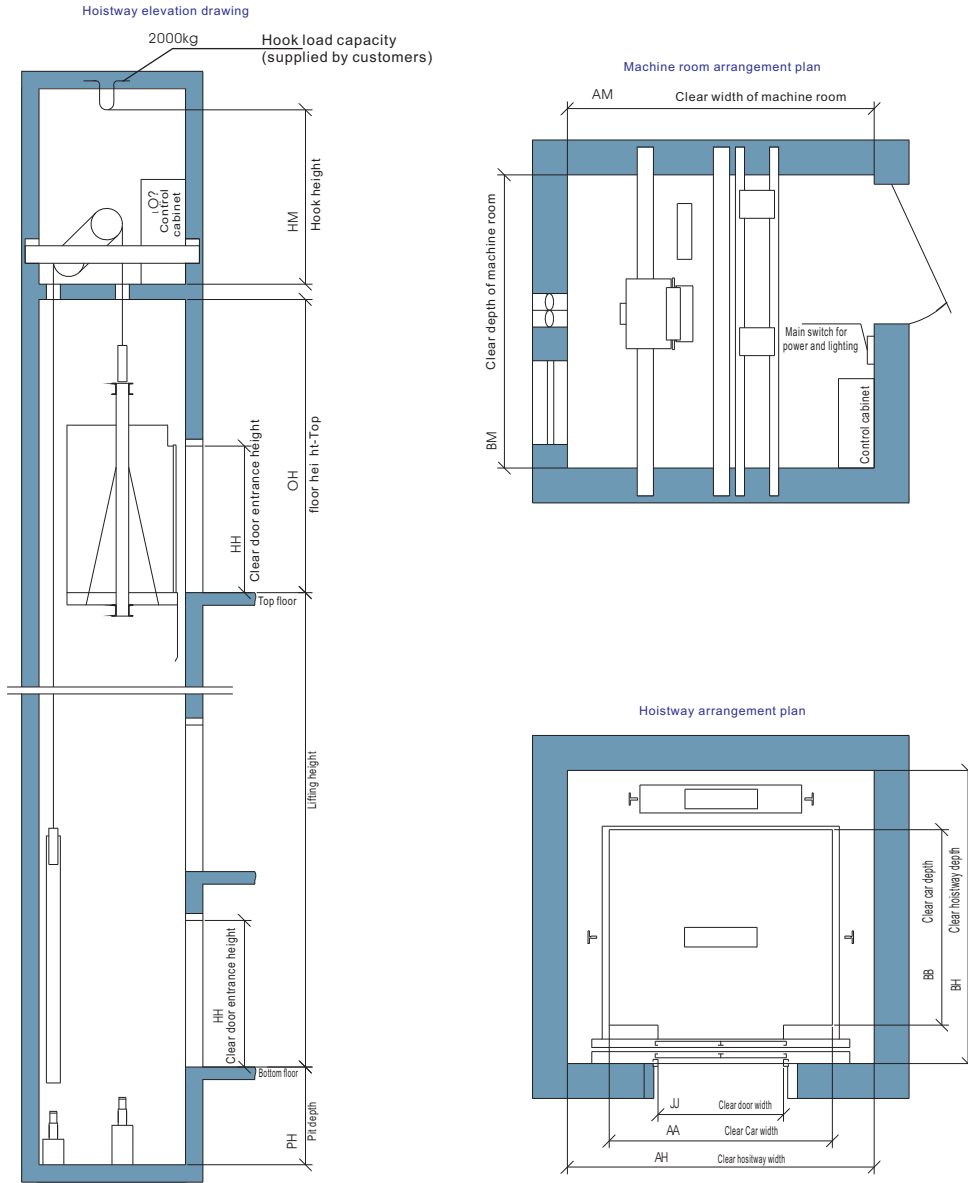


# PASSENGER 1



Main technical parameters (gearless)

rated capacity rated number of passengers (kg/P)	rated speed s/m()	car size		door size		hoistway dimensions				machine room dimensions		
		mm(AA)	mm(BB)	mm(JJ)	mm(HH)	mm(AH)	mm(BH)	mm(PH)	mm(OH)	mm(AM)	mm(BM)	mm(HM)
630/8	1.0	1400	1100	800	2100	2000	1800	≥ 1400	≥ 4300	2000	1800	≥ 2000
	1.6							≥ 1650	≥ 4400			
	1.75							≥ 1650	≥ 4400			
800/10	1.0	1400	1350	800	2100	2000	2050	≥ 1400	≥ 4300	2000	2050	≥ 2000
	1.6							≥ 1650	≥ 4400			
	1.75							≥ 1650	≥ 4400			
	2.0							≥ 1650	≥ 4400			
1000/13	1.0	1600	1400	900	2100	2200	2100	≥ 1400	≥ 4300	2200	2200	≥ 2000
	1.6							≥ 1650	≥ 4400			
	1.75							≥ 1650	≥ 4400			
	2.0							≥ 1650	≥ 4400			